

# PROSTAR™ ROLLING SHEET DOORS



PRODUCT LINE

COMMERCIAL WINDLOAD

COMMERCIAL DOOR

SELF-STORAGE

MODELS

790CW

780CD

770SS



INDUSTRY LEADING  
COMMERCIAL & INDUSTRIAL SOLUTIONS



## General features and benefits

### Strong and durable construction

- High-strength galvanized steel curtain enhances strength and maximizes wind load performance
- Unique curtain profile facilitates smooth operation and minimizes curtain damage
- Stepped rings allow tight, uniform curtain wrap and minimize headroom requirements
- Abrasion resistant polypropylene rub strips along both guide edges and flexible webbing along both curtain edges improve door operation, minimize curtain nesting and scratching
- Bearings prevent steel-to-steel contact, improve door operation and increase door shaft life
- Extruded aluminum-reinforced bottom bar assembly enhances door strength and operation
- Bulb-type astragal ensures tight seal to floor
- Lock assemblies enhance door system security

**Cover image:** Model 790CW, white finish

**Image above:** Model 780CD, glossy white finish

### Fast and easy installation

- Quick-connect headplate eliminates the need for multiple fasteners (available on 770SS only)
- Quick-connect bottom bar stops minimize fasteners and allow easy insertion of curtain into the guides
- Universal guide allows fastening in concrete, masonry, or wood jambs and fastening or welding to steel jambs
- Through-hole design reduces sideroom requirements
- Non-handed chain hoist (780CD and 790CW) with quick-connect features simplifies and speeds installation on site

### Special design features for wind load applications (Model 790CW)

- Heavy-duty guide allows rolling sheet door system to meet stringent wind load specifications
- Curtain wind locks reinforce curtain and enhance wind loading performance and smooth operation

### Broad size ranges and color options

- Door sizes to 20' wide by 16' high (6096 mm by 4877 mm)
- Self-storage door sizes from 3' wide by 7' high (914 mm by 2134 mm) up to 10' wide by 10' high (3048 mm by 3048 mm)
- Spectrum of curtain colors.



## An attractive and solidly constructed rolling door on a budget

These doors incorporate innovative design elements that enable fast installation and ensure smooth operation for enhanced door life. Key features include quick-connect components that simplify installation without sacrificing strength. A single, through-hole universal guide can be installed quickly and easily in concrete, masonry, steel or wood – and it requires minimal sideroom. Stepped curtain rings further minimize headroom by ensuring a tight curtain wrap, and standard roller bearings eliminate steel-on-steel contact for quieter, easier operation and extended life. Available in a variety of colors and sizes to fit openings from 3' wide by 7' high to 20' wide by 16' high (914 mm by 2134 mm to 6096 mm by 4877 mm), these full-feature doors are an ideal choice when functionality is as important as value, quality and aesthetics.

## Color options for all models

Actual colors may vary from brochure due to fluctuations in the printing process. Always request a color sample from your Overhead Door™ Distributor for accurate color matching.



White



Glossy White



Silhouette Gray



Desert Tan



Garnet Red



Walnut Brown



Polar Blue



Royal Blue



Teal



Dark Teal



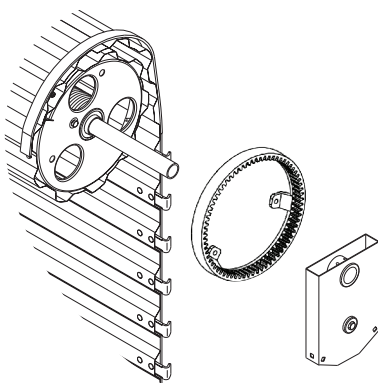
Forest Green



Bronze

## Door components

### 780CD/790CW



Headplate



Interior bottom bar slide bolt



Stepped ring with roller bearing

### 770SS



Quick-connect headplate



Exterior curtain slide lock



Headplate with roller bearing



Stepped ring



Bottom bar stops

**General specifications for PROSTAR™ ROLLING SHEET DOORS**

Model	790CW Commercial wind load door	780CD Commercial door	770SS Self-storage door
Maximum standard width	20' (6096 mm)	16' (4877 mm)	10' (3048mm)
Maximum standard height	16' (4877 mm)	16' (4877 mm)	10' (3048mm)
26-gauge curtain	Standard	Standard	Standard
Curtain rub strips (both front edges)	Standard	Standard	Standard
High strength curtain material	Standard	Standard	Standard
22/-22 psf minimum wind load design/pressure rating	Standard	N/A	Optional
Universal guide	14-gauge	18-gauge	18-gauge
Polypropylene guide rub strips (both edges)	Standard	Standard	Standard
Mounting Concrete Masonry Wood Steel	Standard Standard Standard Standard	Standard Standard Standard Standard	Standard Standard Standard Standard
Extruded aluminum bottom bar	Standard	Standard	Standard
12-gauge Quick-Connect bottom bar stops	Standard	Standard	N/A
14-gauge Quick-Connect bottom bar stops	N/A	N/A	Standard
11-gauge headplate	Standard	Standard	N/A
14-gauge headplate	N/A	N/A	Standard
Head plate roller bearing	Standard	Standard	Standard
Operation Manual Chain hoist	Standard Optional*	Standard Optional*	Standard N/A

\* Standard on larger doors as shown on price grids. Contact your Overhead Door distributor for more details.

**Options for PROSTAR™ ROLLING SHEET DOORS**

Model	790CW Commercial wind load door	780CD Commercial door	770SS Self-storage door
Electric operator (Model RMX®)	20' (6096 mm)	16' (4877 mm)	N/A
Curtain locking mechanism Exterior curtain slide lock (left or right handed) Interior bottom bar slide bolt set (left & right handed)	Optional Standard	Optional Standard	Standard* Optional
Header draft seal	Optional	Optional	Optional
Jamb extension brackets	Optional	Optional	N/A

\*Standard on exterior mounted doors only.





## MODEL 790CW

When your project requires a door that can handle high wind load conditions, yet is attractive, versatile, and economical, the 790CW fits the job. It is designed for fast installation, smooth operation and low maintenance.

### Standard features at a glance

Maximum standard width	20' (6096 mm)
Maximum standard height	16' (4877 mm)
Curtain	26-gauge, roll-formed galvanized steel sections interlocked and seamed to form full door height with curtain wind locks
Curtain material	High strength steel
Curtain rub strips	Flexible webbing on both front edges
Counterbalance assembly	12" (305 mm), steel stepped rings to minimize headroom and enhance door operation
Wind loading	Integrated curtain wind locks and guide to withstand wind loading to minimum design pressures of 22/-22 psf (107/-107 kgf/sq m)
Universal guides	14-gauge, roll-formed galvanized steel with pre-punched through-hole design for mounting to concrete, masonry, steel or wood jambs
Headplate	11-gauge steel
Bottom bar	Extruded aluminum reinforced with steel, roll-formed angles
Quick-connect bottom bar stops	12-gauge galvanized steel
Bottom seal	Bulb-type, astragal seal

Guide rub strips	Polypropylene on both edges
Standard springs	3 3/8" (86 mm) torsion springs
Operation	Manual or non-handed reduced drive chain hoist (depending on door size) with quick-connect components
Lock	Interior bottom slide lock (right & left handed)
Exterior/interior finish	Paint finish in choice of 12 standard colors: White, Glossy White, Garnet Red, Royal Blue, Polar Blue, Forest Green, Desert Tan, Dark Teal, Teal, Walnut Brown, Bronze and Silhouette Gray

### Options

Electric operator (Model RMX®)
Chain hoist with reduced drive, non-handed quick-connect components (standard on some 790CW doors, depending upon size)
Exterior curtain slide lock (accepts cylinder lock or 2 padlocks*) (right or left handed)
Jamb extension brackets
Full length angle jamb brackets
Header draft seal

\*Cylinder locks and padlocks not provided

### WIND LOAD RATINGS

#### 790CW standard design pressure rating (psf)

Opening width (ft)	8	9	10	11	12	13	14	15	16	17	18	19	20
Pressure (Design/Test)	41/-41	41/-41	41/-41	41/-41	41/-41	36/-36	36/-36	31/-31	31/-31	26/-26	26/-26	22/-22	22/-22

Note: Opening widths shown are up to and including the dimension shown.

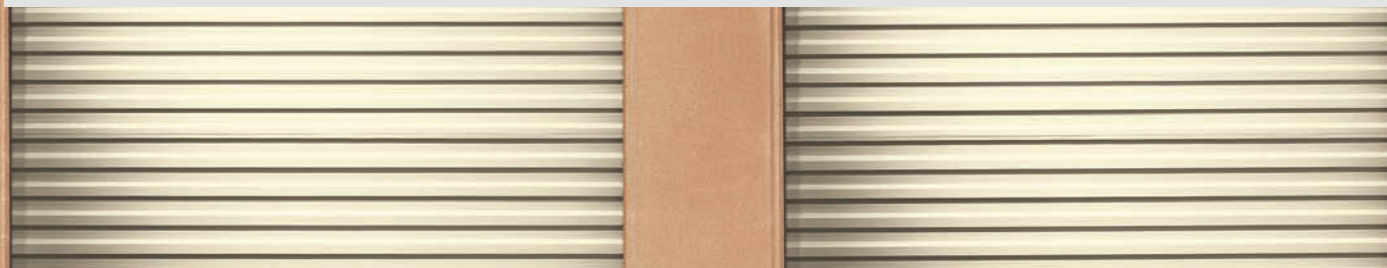
### HEADROOM AND SIDEROOM REQUIREMENTS

Headroom requirements	Sideroom requirements	
	Manual push-up	Chain hoist
Minimum 17" (432 mm) Maximum 23" (584 mm)	6" (152 mm)	10" (254 mm)



## MODEL 780CD

The 780CD is designed for medium-duty usage environments where a high wind load-rated door is not required. It features quick and easy assembly without sacrificing stability or durability. It can be mounting directly to concrete, masonry, steel or wood jambs.



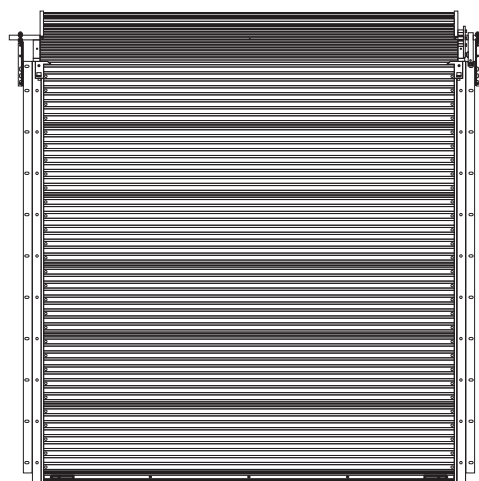
### Standard features at a glance

Maximum standard width	16' (4877 mm)
Maximum standard height	16' (4877 mm)
Curtain	26-gauge, roll-formed galvanized steel sections interlocked and seamed to form full door height
Curtain material	High strength steel
Curtain rub strips	Flexible webbing on both front edges
Counterbalance assembly	12" (305 mm), steel stepped rings to minimize headroom and enhance door operation
Universal guides	18-gauge, roll-formed galvanized steel with pre-punched through-hole design for mounting to concrete, masonry, steel or wood jambs
Headplate	11-gauge steel
Bottom bar	Extruded aluminum reinforced with steel, roll-formed angles
Quick-connect bottom bar stops	12-gauge galvanized steel
Bottom seal	Bulb-type, astragal seal
Guide rub strips	Polypropylene on both edges
Standard springs	3 3/8" (86 mm) torsion springs
Operation	Manual or non-handed reduced drive chain hoist (depending on door size) with quick-connect components
Lock	Interior bottom bar slide lock (left & right handed)
Exterior/interior finish	Paint finish in choice of 12 standard colors: White, Glossy White, Garnet Red, Royal Blue, Polar Blue, Forest Green, Desert Tan, Dark Teal, Teal, Walnut Brown, Bronze and Silhouette Gray

### Options

Electric operator (Model RMX®)
Chain hoist with reduced drive, non-handed quick-connect components (standard on some 780CD doors, depending upon size)
Exterior curtain slide lock (accepts cylinder lock or 2 padlocks*) (right or left handed)
Jamb extension brackets
Header draft seal

\*Cylinder lock and padlocks not supplied



### HEADROOM AND SIDEROOM REQUIREMENTS

Headroom requirements	Sideroom requirements	
	Manual push-up	Chain hoist
Minimum 17" (432 mm) Maximum 22" (559 mm)	6" (152 mm)	10" (254 mm)



## MODEL 770SS

The Model 770SS is ideal for lighter-duty self-storage facilities that require a quality door that installs quickly, operates dependably, and requires minimal maintenance.

## Standard features at a glance

Maximum standard width	10' (3048 mm)
Maximum standard height	10' (3048 mm)
Curtain	26-gauge, roll-formed galvanized steel sections interlocked and seamed to form full door height
Curtain material	High strength steel
Curtain rub strips	Flexible webbing on both front edges
Counterbalance assembly	9" (229 mm), steel stepped rings to minimize headroom and enhance door operation
Universal guides	18-gauge, roll-formed galvanized steel with pre-punched through-hole design for mounting to concrete, masonry, steel or wood jambs
Headplate	11-gauge steel
Bottom bar	Extruded aluminum reinforced with steel, roll-formed angles
Quick-connect bottom bar stops	14-gauge galvanized steel with roller bearings
Bottom seal	Bulb-type, astragal seal
Guide rub strips	Polypropylene on both edges

Standard springs	3 3/8" (86 mm) torsion springs
Operation	Manual push up center handle with side step plate, and center rope attached to bottom bar
Lock	Exterior curtain slide lock (accepts cylinder, lock or 2 padlocks*) (right or left handed)
Exterior/interior finish	Paint finish in choice of 12 standard colors: White, Glossy White, Garnet Red, Royal Blue, Polar Blue, Forest Green, Desert Tan, Dark Teal, Teal, Walnut Brown, Bronze and Silhouette Gray

\*Cylinder locks and padlocks not provided

## Options

Additional exterior curtain slide lock
Interior bottom bar slide lock set (left & right handed)
Header draft seal
Wind load: Integrated curtain wind locks and guide to withstand wind load to minimum design pressures of 36/-36 psf (175/-175 kgf/sq m)

## WIND LOAD RATINGS

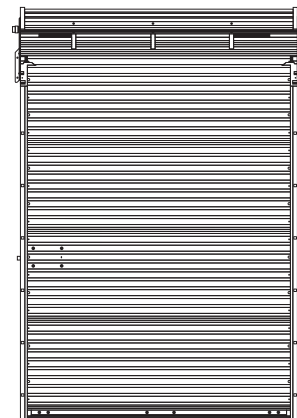
## 770SS standard design pressure rating (psf)

Opening width (ft)	3	4	5	6	7	8	9	10
Pressure (Design/Test)	36/-36	36/-36	36/-36	36/-36	36/-36	36/-36	36/-36	36/-36

Note: Opening widths shown are up to and including the dimension shown.

## HEADROOM AND SIDEROOM REQUIREMENTS

Headroom requirements	Sideroom requirements	
	Manual push-up	Chain hoist
13" (330 mm)	3 1/2" (89 mm)	N/A







Model 780CD, Glossy White finish



## Architect's Corner

A resource for architects, containing comprehensive technical and resource materials to support your project, including drawings and specifications for commercial doors.

[overheaddoor.com](http://overheaddoor.com)

### The original, innovative choice for unequalled quality and service.

Overhead Door Corporation pioneered the sectional garage door industry, inventing the first sectional garage door in 1921 and the first electric door operator in 1926. Today, we continue to be the industry leader through the strength of our product innovation, superior craftsmanship and outstanding customer support, underscoring a legacy of quality, expertise and integrity. That's why design and construction professionals specify Overhead Door™ products more often than any other brand. Our family of over 400 Overhead Door™ Distributors across the U.S. and Canada not only share our name and logo, but also our commitment to excellence.



INDUSTRY LEADING  
COMMERCIAL & INDUSTRIAL SOLUTIONS



2501 S. State Hwy. 121 Bus., Suite 200, Lewisville, TX 75067  
1-800-929-DOOR • [sales@overheaddoor.com](mailto:sales@overheaddoor.com)  
[overheaddoor.com](http://overheaddoor.com)